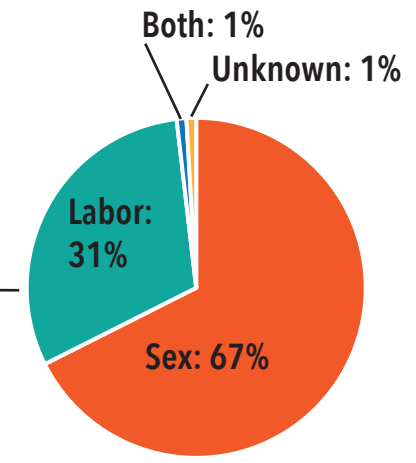
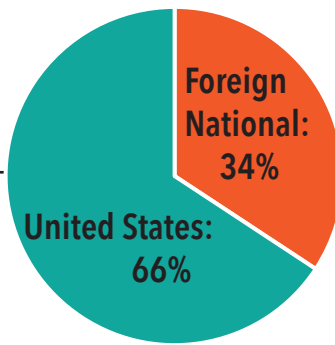
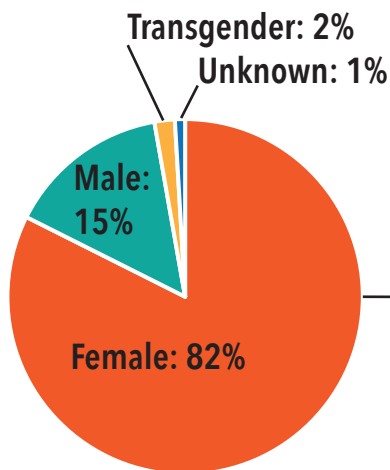


Human Trafficking Direct Services

Program Participant Demographics

January 2016 to December 2019

108 Total
Program Participants



15 Countries
Represented

11 Languages
Spoken

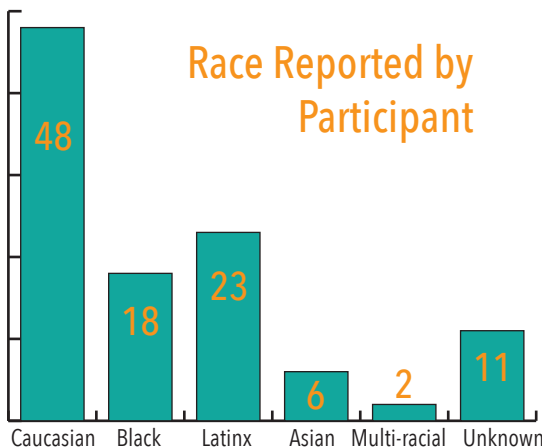
13 LGBTQIA+
People Served

Average length
of time engaged
in services:
11.89 Months

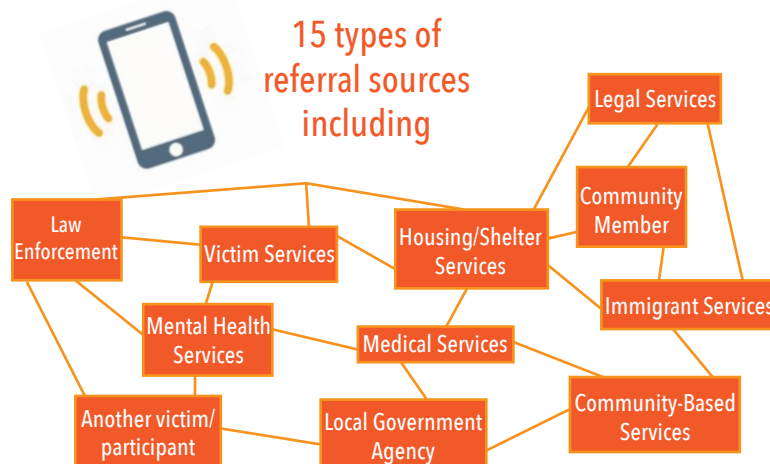
Top Countries of Origin
(Outside of United States)

- Mexico (7)
- Guatemala (7)
- India (4)
- Congo (4)
- Nigeria (3)
- Honduras (3)

Race Reported by
Participant



15 types of
referral sources
including



13 minors
served




Human Trafficking Direct Services

Supportive Services Provided

January 2016 to December 2019

 **1643** hours of case management

 **293** hours of emotional support

 **103** hours of housing advocacy

 **78** hours of social services advocacy or explanation of benefits

 **25** hours of safety planning



\$202,872
in rental assistance

Or **253** months of rent at \$800/month



326 instances of healthcare assistance
(medical, dental & mental health)
valued at **\$12,439**

\$11,731
used for utilities



Personal care items provided totaling
\$6,412

\$16,345
of food provided



330 instances of interpreter services
totaling **\$5,307**



\$8,251
in transportation costs



Or **165** bus passes



Legal services totaling
\$11,886

...and **\$27,746** spent on various uncategorized direct aid requests.

Services provided to 108 total program participants.

The Bakhita Empowerment Initiative supports survivors of sex and labor trafficking regardless of race, gender, sexual orientation, age, religious preference, language, national origin, immigration status, disability, marital status, or family status.